

# MODEL SLD-603 SERIES DIRECTIONAL SHIELD FOR 208/213 SERIES PRESSURE RELIEF DEVICES

BULLETIN  
QT-SLD-603

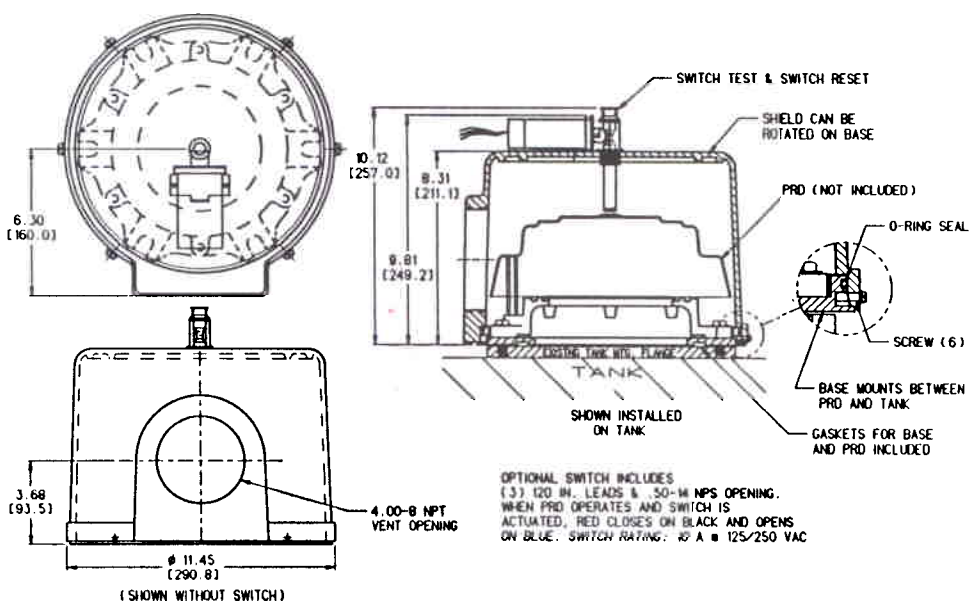


## FEATURES

- Designed to retrofit easily to Qualitrol 208/213 Series Pressure Relief Devices.
- Provides excellent protection against corrosion to the PRD due to environmental conditions.
- Manufactured of rugged cast aluminum to withstand the temperature and pressure of discharge.
- Supplied with a top indicator and semaphore for high visibility of PRD operation.
- Ability to rotate 360° for complete flexibility in directing the oil or gas spray.
- Compact geometry provides for field retrofit even in close quarters.
- An externally mounted switch is available and provides easy test and reset capability from outside the Shield.
- Tapered pipe thread opening allows use of standard 4" pipe for ductwork to further direct oil spray.

## DESCRIPTION

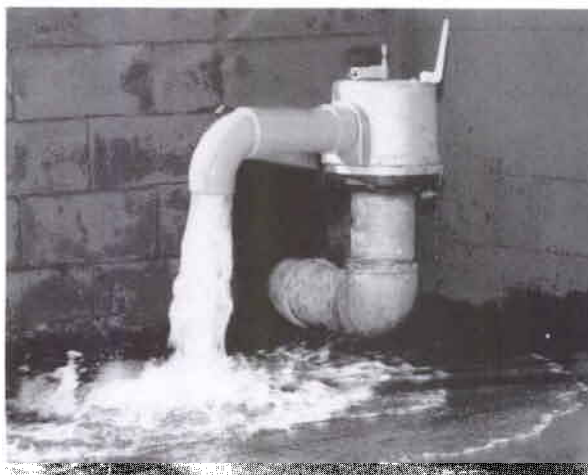
The QualiTROL Series SLD-603 Directional Shield for Pressure Relief Devices is designed to direct the spray of oil and gas should the Pressure Relief Device operate. It provides a full 360° rotation for complete flexibility in directing the spray. The compact geometry facilitates retrofit in even the tightest quarters and the included base provides a consistent sealing surface regardless of tank mounting flange size. To install the shield, the PRD is removed and the base is placed between it and the mounting flange. The base is vented to allow for drainage of moisture. The shield opening includes a 4 inch tapered pipe thread to accept standard pipe for ductwork. The pipe should be supported separately. The use of cast aluminum assures durability and resistance to the temperature and pressure of the oil. A bright yellow semaphore is included as standard and provides highly visual indication of PRD operation.



The Series SLD-603 Shield is not designed to be used with the standard QualiTROL side-mounted alarm switch. An externally mounted switch is available as an option, and provides easy test and reset capability from outside the Shield. The standard external switch is supplied with 120 inches of flying leads and a .50-14 NPS opening.



Pressure Relief Device Actuating  
Without Shield Installed



Pressure Relief Device Actuating  
With Shield Installed

## HOW TO ORDER:

Please specify Part Number:    SLD-603-1    Shield with Alarm Switch  
   SLD-603-2    Shield only

**QUALITROL**  
CORPORATION™

1385 FAIRPORT ROAD  
FAIRPORT, NEW YORK 14450  
(716) 586-1515 • FAX (716) 377-0220