



2023

PRODUCT CATALOG



Introducing Cargolog® 3rd Gen

- The Ultimate Solution for Safe and Secure Shipment Monitoring

“Data is not just information. It’s knowledge. With Cargolog 3rd Gen, see what happens to your cargo every second of the transport and gain valuable insights to optimize your logistics operations.”

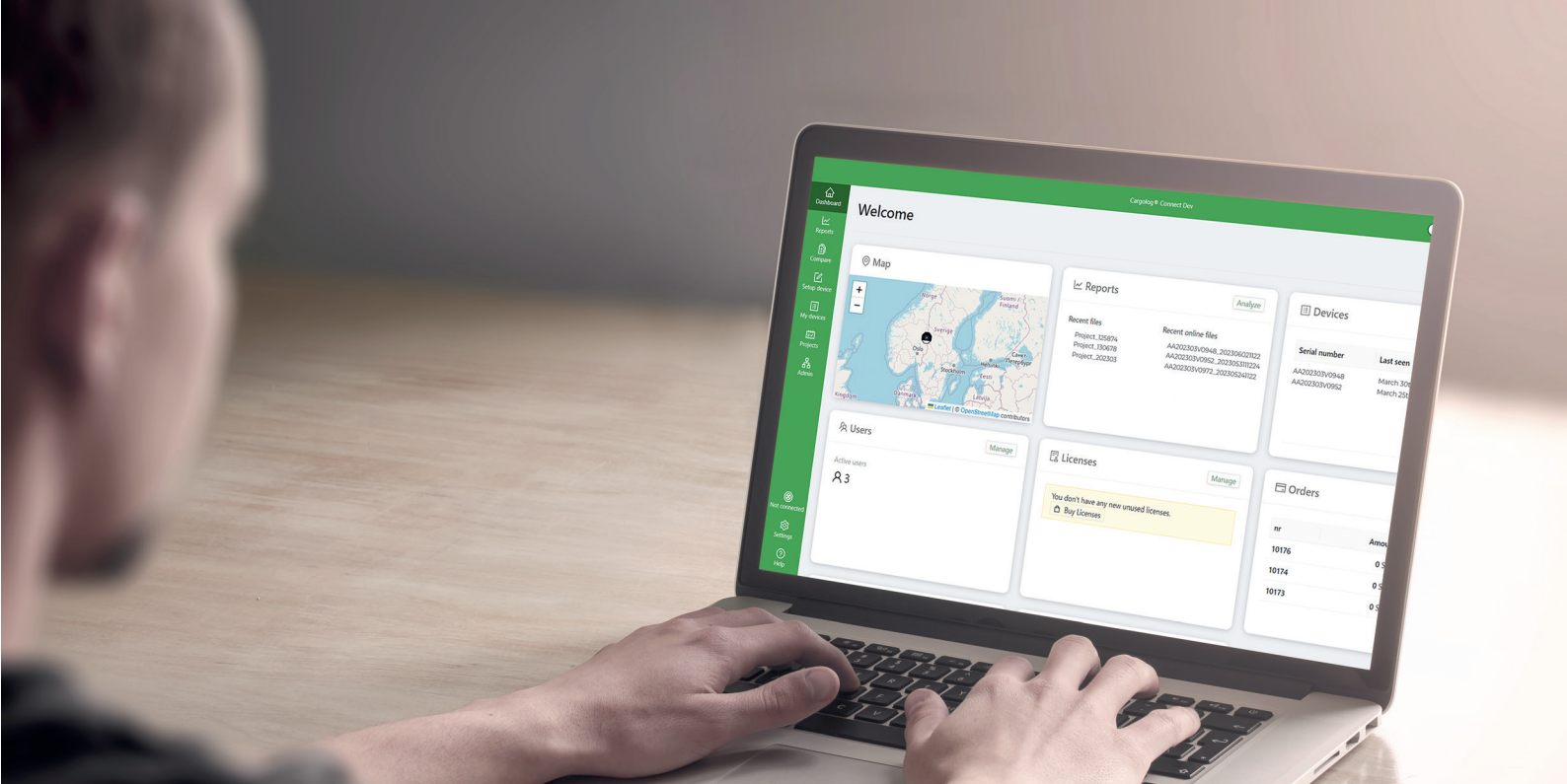
- Sven Olsson, CEO, Mobitron AB

Copyright © 2023 Mobitron AB

All rights reserved

Mobitron AB, Mobitron logotype, Cargolog, and other products from Mobitron have registered trademarks of Mobitron AB. Other companies or products mentioned herein may be registered trademarks of their respective owners. This publication may not be reproduced or used in any manner whatsoever without the publisher’s express written permission or passed on to any third parties. They are manufactured according to quality standard ISO 9001: 2008, ISO 14001: 2004.

Please note: The data in our publications may differ from the data of the products delivered. We reserve the right to make changes without notice.



Contents	
Cargolog® 3rd Generation	4
Hardware platform	4
Cargolog® Connect.....	5
Sensors Technical Data	8
GPS Positioning	9
Internet of Things	
- Online data	10
Detailed vibration analysis	
- shock curve.....	11
Mounting accessories.....	12
Type.....	13
Cargolog® Connect.....	14
Cargolog® 3rd Gen - Impact & Shock Recorder.....	16
Cargolog® 3rd Gen - Impact & Condition Monitoring.....	18
Cargolog® 3rd Gen - Track & Trace.....	20
Cargolog® 2nd Gen - Basic Recorder	22
Cargolog® 2nd Gen - Standard Recorder.....	24
Cargolog® 2nd Gen - GPS Positioning	26
Cargolog® 2nd Gen - Online Tracking.....	28
Software	30
Type.....	31
Communication.....	34
Attachment.....	36
GSM Antennas	44
GPS Antennas	46
Lithium Metal Battery	48
Alkaline battery.....	50

3rd Gen

HARDWARE PLATFORM

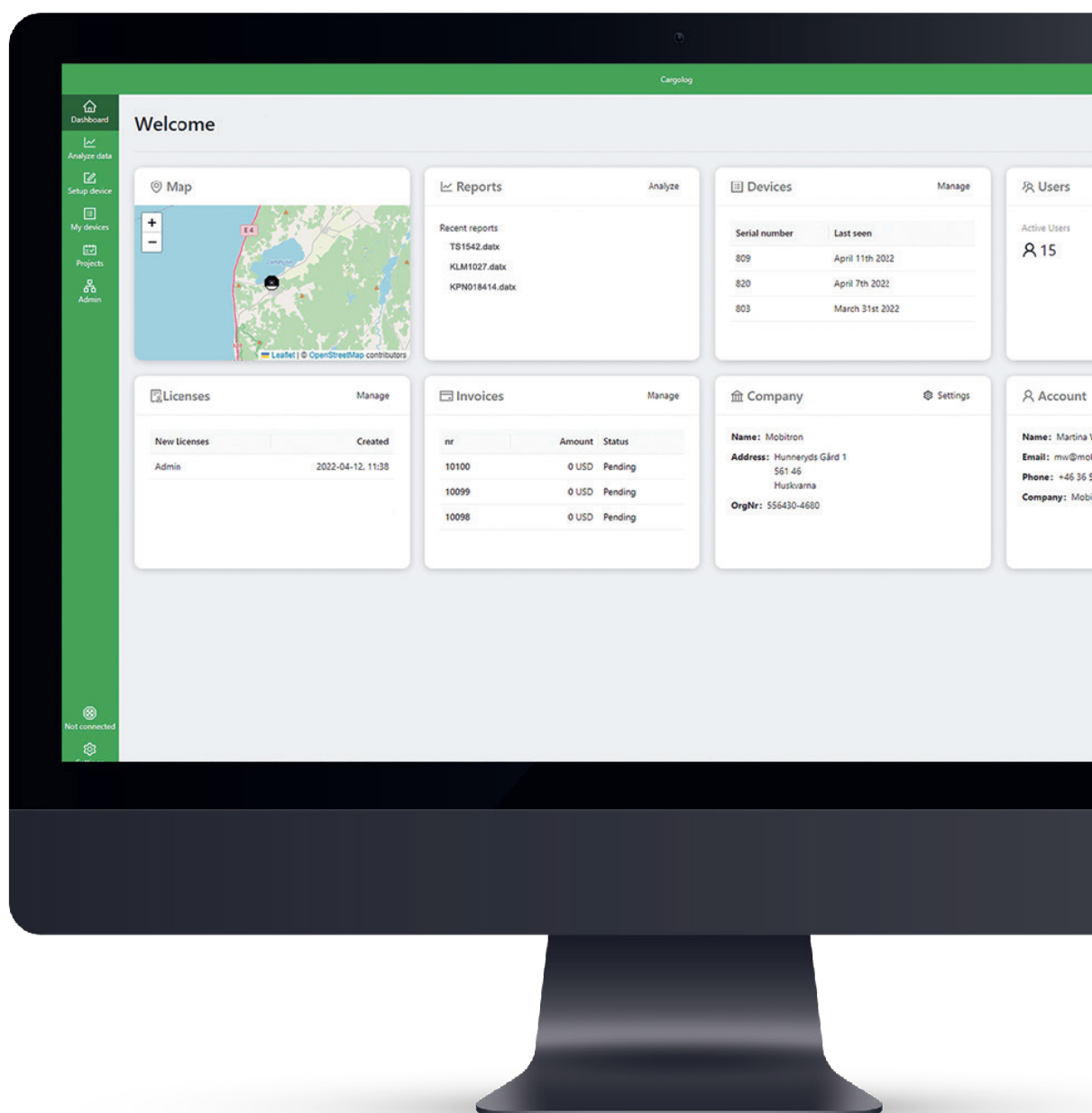
Cargolog 3rd Gen has been designed with the latest technology in our field to achieve optimal results. Also, we have gathered experts to develop and ensure the highest possible precision and reliability. As a result, we can offer a product of the highest quality. Each delivered product is calibrated according to international standards to provide a reliable and accurate Impact Recorder to monitor your cargo during transportation.

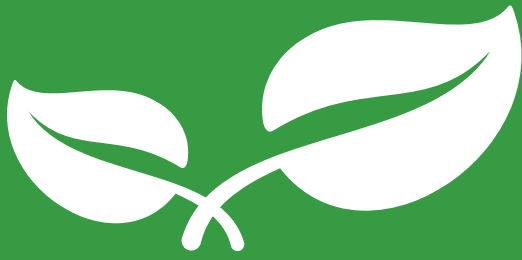
Moreover, we have developed Cargolog 3rd Gen with ease of use in mind, with an intuitive user interface and powerful software, Cargolog Connect, that makes it easy to use and analyze data. As a result, it helps to ensure regulatory compliance, improve product quality and safety, reduce costs, and improve supply chain visibility.





The software, Cargolog® Connect, used with Cargolog 3rd Gen, is a user-friendly application that allows customers to configure, start, and stop recordings and view and analyze data in real time. The software also includes customizable alarm thresholds, report generation, and data export capabilities. In addition, it can be installed on both desktop and mobile devices, making it accessible and convenient for users on the go. Overall, the software enhances the functionality and usability of Cargolog 3rd Gen, providing customers with a comprehensive solution for impact and shock monitoring during transport.





GO GREEN

Cargolog® - an essential tool for companies committed to environmental sustainability. By monitoring and minimizing the impact of their transportation activities, companies can reduce their carbon footprint and contribute to a greener future.

By incorporating the Cargolog® device to measure and record acceleration, environmental conditions, temperature, humidity, angle, pressure, etc., into their transportation activities, companies can reduce their environmental impact and demonstrate their commitment to sustainability and responsible business practices.





By detecting and recording impact events and environmental conditions during transportation, the Cargolog® device can help identify areas providing valuable insights into environmental initiatives' effectiveness and identifying improvement areas.



Using the Cargolog® device can lead to the more careful handling of goods during transportation, resulting in reduced damage and waste and, ultimately, a more sustainable business.



Through real-time monitoring, the Cargolog® device allows companies to take immediate action to prevent further damage and minimize the environmental impact of transportation activities.



By tracking the position and seeing the route, companies can optimize their transportation routes, reduce unnecessary fuel consumption, and minimize carbon emissions, contributing to their green initiatives and sustainability efforts.

The Cargolog 3rd Gen is fully compliant with the Reach and RoHS directives. The Reach (Registration, Evaluation, Authorisation, and Restriction of Chemicals) directive is a European Union regulation that aims to protect human health and the environment from the risks posed by chemicals. RoHS (Restriction of Hazardous Substances) is another EU directive that restricts the use of certain hazardous materials in the production of electronic and electrical equipment.



3rd Gen



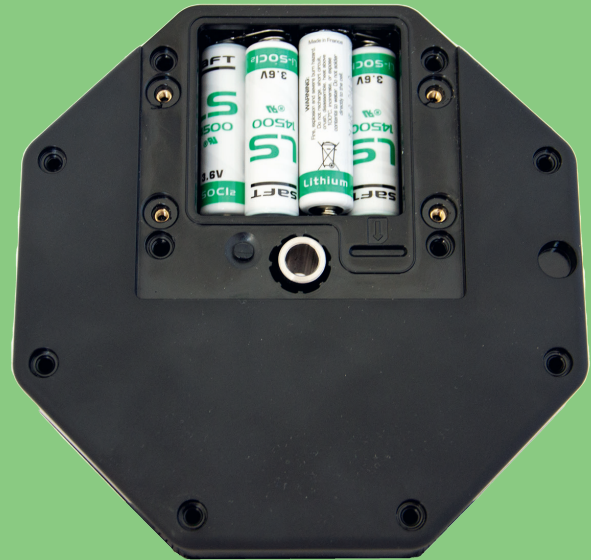
LED INDICATOR

Multicolor LED display for immediate indication on-site. With the push of a button, you get all the information you need to move forward in your work.

- Multicolor functional LED indicators
- Battery indicator
- Alarm indication
- Active sensors
- Communication mode
- Activation button
- Light intensity adjusted to the surrounding

IP67-CLASSIFIED

Cargolog 3rd Gen is now even more durable, with the addition of an IP67 rating. This classification means that the recorder is now fully protected against dust and can withstand being submerged in water up to one meter for up to thirty minutes.



CENTER HOLE

Cargolog® 3rd Gen comes with a center hole for mounting, making installation even more accessible and convenient using only one M8 screw.

NEW BATTERY SIZE - TYPE AA

Our latest Cargolog® device now utilizes a new AA battery type, made possible by its lower power consumption. In addition, this new battery type contains less lithium, making it compliant with regulations and not classified as dangerous goods under Class 9.

This new battery type offers several benefits, including extended battery life, improved cost efficiency, simplified logistics process, and reduced risk of transportation incidents, ensuring that shipments arrive at their destination safely and securely.



SENSORS TECHNICAL DATA

Acceleration	
Acceleration Ranges	$\pm 16g$ / $\pm 200g$
Measuring range	0,1-16g / 0,1-200g
Hardware Filters	12 optional filter settings 8,8Hz to 800Hz
Resolution	0,01g / 0,1g
Accuracy	$\pm 2\%$ / $\pm 3\%$
Detailed Vibration Analysis	
Complete measuring cycle of acceleration above preset level for DVA. The waveform is shown with acceleration in G along the Y-axis and time in ms along the X-axis to estimate both amplitude and shock frequency.	
Angle	
Angle	$\pm 180^\circ$
Angle Accuracy	$\pm 1^\circ$
Angle Resolution	0,1°
Temperature/Humidity	
Temperature Measuring Range	-40°C to +85°C
Temperature Accuracy	$\pm 0,5^\circ\text{C}$ FS
Temperature Resolution	0,01°C
Humidity Measuring Range	0-100% RH
Humidity Accuracy	$\pm 3\%$ RH FS
Humidity Resolution	0,01%
Pressure	
Pressure	0-2000 mBar (Internal or External)
Pressure Accuracy	$\pm 1\%$ FS
Pressure Resolution	0,5 mBar
GPS	
Channels	72 channels, Satellite system: GPS, Glonass, BeiDou
High Accuracy Position	GPS $\pm 2,5\text{m}^*$ CEP, BeiDou, Galileo (At optimal antenna placement)
Connection	Internal antenna or external connection, different variants of antenna are offered depending on the application to reach optimal placement
Light	
Indication of light to detect if the package is opened or closed.	
GSM	
Region	Global
Frequency Bands	LTE/3G/2G
Connection	External antenna connection, different variants of antenna are offered depending on the application to reach optimal placement
Bluetooth	
Bluetooth	Communicate via Bluetooth® wireless technology 5

GPS POSITIONING

Cargolog 3rd Gen with advanced GPS technology allows for quicker and more accurate tracking of shipments. With its advanced GPS technology, Cargolog 3rd Gen can provide real-time location information and detailed route tracking for improved logistics and supply chain management.

Cargolog 3rd Gen can be equipped with an internal or an external antenna, depending on the user's needs and preferences. An internal antenna is convenient for users who prefer a more streamlined device and do not require long-range GPS tracking capabilities. On the other hand, the external antenna is ideal for users who require longer-range tracking and better signal strength in areas with poor GPS reception. Both options provide reliable and accurate GPS tracking, allowing users to monitor their shipments in real-time and make informed logistics and supply chain management decisions.





INTERNET OF THINGS (IoT) - ONLINE DATA

Cargolog® 3rd Gen with GSM technology lets users receive real-time data. Monitor and analyze data during transport using an Impact Recorder equipped with a GSM module. Get valuable insights into the transportation conditions and identify any potential issues. With this feature, users can make informed decisions and take necessary actions to ensure the safe and secure transportation of their goods.



Monitor real-time shocks, impacts and condition data during transportation, allowing for immediate response in case of deviations from the desired conditions.



Set up the Impact Recorder to send alerts at exceeded threshold to help prevent damage to the shipment and reduce the risk of losses.



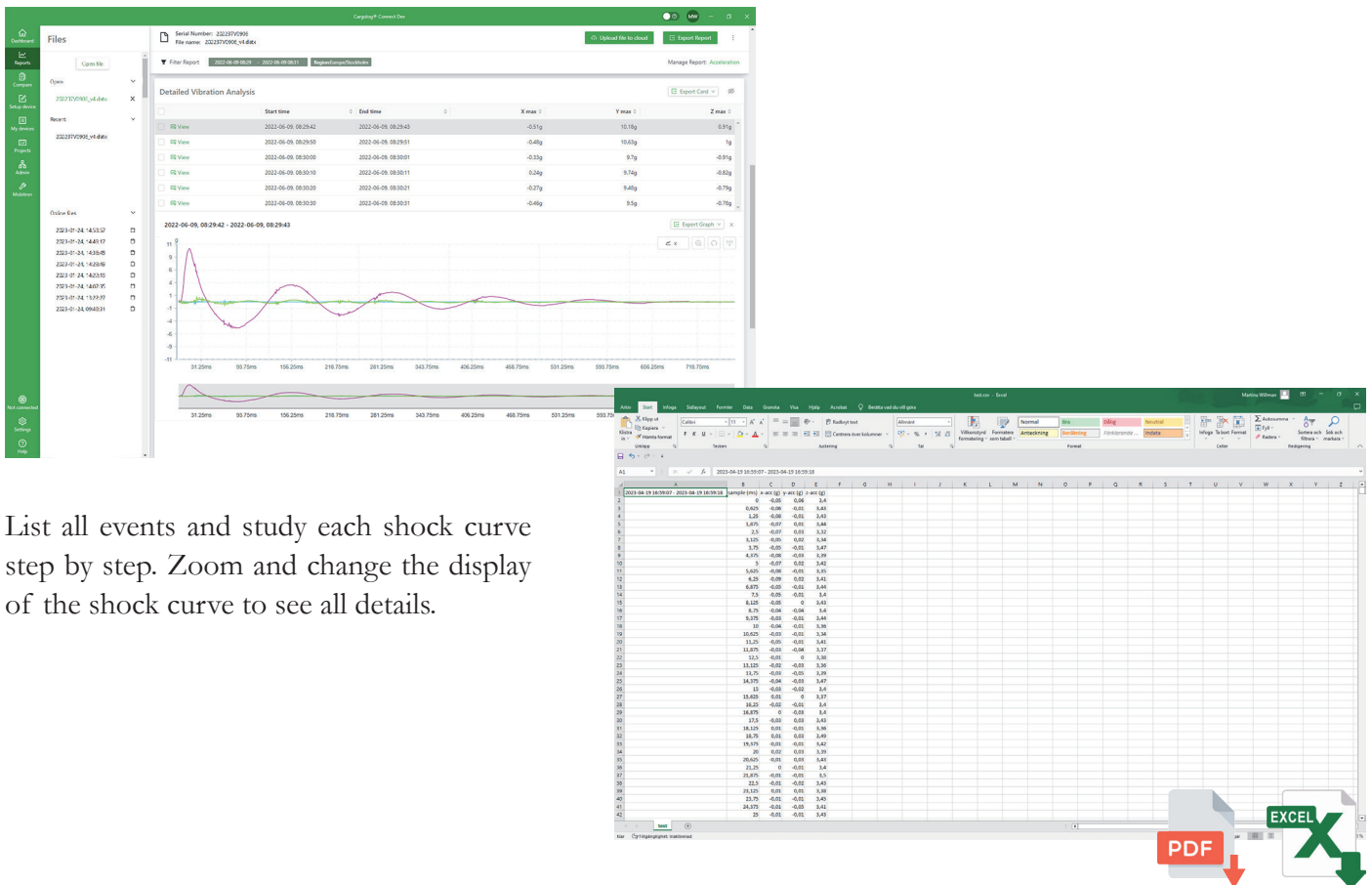
Access data remotely from any device with an internet connection. Remote access makes it easy to monitor shipments from anywhere in the world.

DETAILED VIBRATION ANALYSIS - SHOCK CURVE

3rd Gen

With Detailed Vibration Analysis (DVA), not only the summary of the shock but also the complete measuring cycle, calculated from static acceleration before and after, is recorded and stored.

The waveform is shown with acceleration in G along the Y-axis and time in ms along the X-axis to estimate both amplitude and shock frequency.



List all events and study each shock curve step by step. Zoom and change the display of the shock curve to see all details.

The data can be exported to a semicolon-separated file, allowing for further analysis in software such as Excel or Matlab. Additionally, the graph can be exported directly to PDF format. The information can also be printed for easy reference.

MOUNTING ACCESSORIES

“We understand that our customers rely on our product to ensure the safety and efficiency of their operations. That’s why we’ve kept the shape of Cargolog® 3rd Gen consistent, which will provide a seamless transition for our existing customers and ensure compatibility with existing equipment.”

“We have also developed new mounting options with only one center hole and the ability to mount with a magnet directly to your Cargolog® device.”

- Sven Olsson, CEO of Mobitron AB





TYPE

	Impact & Shock Recorder		Impact & Condition Monitoring		Track & Trace		Customized	
	911UC-G	910UA	9S1UC-G	9S0UA	9G1UC	9G0UA		
Data transmission								
Online, LTE/GSM, external antenna	X		X		X			+
Offline, manually reading of data with USB-C	X	X	X	X	X	X		+
Offline, manually reading of data with Bluetooth								+
Measuring channels								
Acceleration $\pm 16g$	X	X	X	X				+
Acceleration $\pm 200g$								+
Detailed Vibration Analysis	X	X						+
Angle	X	X	X	X				+
Temperature			X	X				+
Humidity			X	X				+
Pressure, internal sensor								+
Pressure, external pressure tube								+
GPS, internal antenna					X	X		+
GPS, external antenna	X		X					+
Light								+
Power supply								
4xAA battery, lithium metal or alkaline (replacable)**		X		X		X		+
2xC battery, lithium metal or alkaline (replacable)**	X*		X*		X*			+
External power connection								+

*Lithium only

**Batteries not included in delivery

+Build and customize your Cargolog®. First, let us know what you want to measure and record.

Then, let us build a product just for you. Contact us for more information!



CREATING REPORTS AND EXPORT

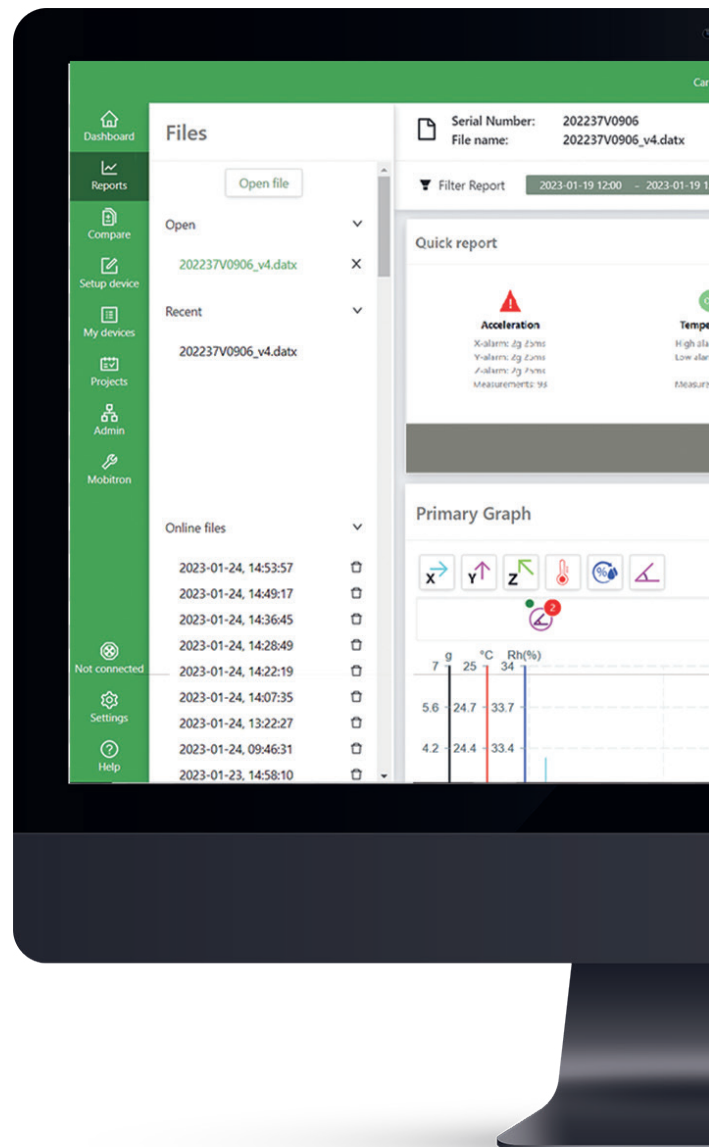
- Customization of reports based on specific needs and preferences.
- Efficiency in automating data collection and analysis, reducing the need for manual data entry or manipulation.
- Transparency by providing precise and concise information to improve trust in the data.

COMPARE DATA

- Comparison of impact forces across different activities, events, or individuals.
- Identification of trends and patterns in impact forces over time for injury prevention and performance improvement.

HANDLING THE SETUP OF DEVICES

- Streamlined setup process to guide users through the setup process, reducing the time and effort required to get devices up and running.
- Enhanced password protection to keep your devices and data safe.



DEVICE MANAGEMENT

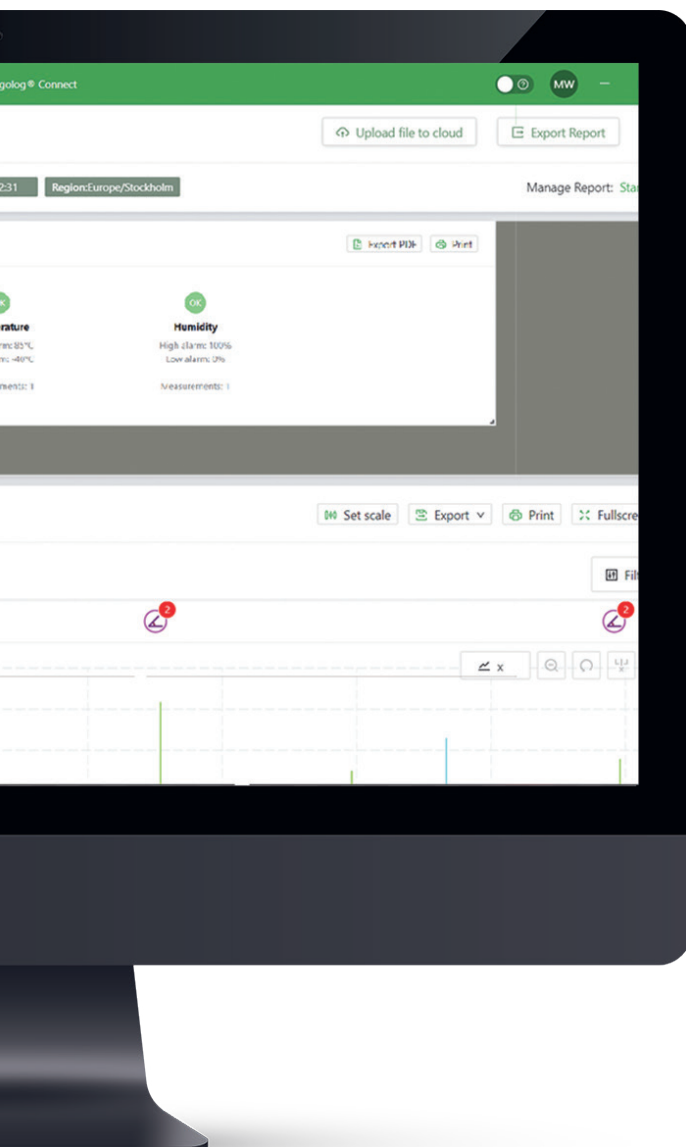
- Centralized device management for managing all of your Cargolog® devices.
- The software can provide real-time tracking of your devices, enabling you to quickly identify their location and status at any time.
- You can easily register your devices within the software, making it easier to keep track of which devices are being used and by whom.

PROJECTS

- Centralized data management for easier access, organization, and analysis of data.
- Standardization of data collection methods to ensure consistent and accurate data.
- Collaboration with colleagues or other stakeholders to share data and insights for more comprehensive analysis and decision-making.

USER ROLES AND PERMISSIONS

- User authentication to protect sensitive data and prevent unauthorized access.
- Assign different roles and permissions to users to ensure they only have access to necessary features and data.
- Handle purchases of licenses directly within the software, making it easier to access and organize.



CARGOLOG® 3RD GEN - IMPACT & SHOCK RECORDER

**2 YEARS
EXTENDED
WARRANTY**



The Cargolog® Impact & Shock Recorder is well suited for monitoring shocks for oversized, heavy, or sensitive goods. Measure and register shocks and angular changes during transport and handling. Detailed Vibration Analysis (DVA) records and displays the shock summary and the complete measuring cycle for all three axes.

- Detailed information on impacts and shocks
- 12 programmable filters, 8,8-800Hz
- Monitor angular changes

Supported Software



Cargolog® Connect

- » High-precision sensors to measure impact and shock events, providing accurate data for analysis.
- » Transmit data in real-time, allowing for immediate action to be taken if an impact or shock event occurs.
- » User-friendly and can be easily installed on any type of cargo.
- » Monitor a wide range of transportation modes, including sea, air, and road transport.
- » Customize to suit your specific needs, including the number of sensors and the frequency of data transmission.
- » Built with high-quality materials and is designed to withstand harsh environmental conditions, ensuring reliable operation even in extreme temperatures and humidity.
- » Reduce the risk of damage to goods and equipment during transport, potentially reducing costs associated with repair or replacement.

Technical Data	
Operation conditions	-40°C to +85°C (lithium), -18°C to +50°C (alkaline)
Communication	USB-C
Date/Time	UTC (date/time), supported by the internal battery
Protection class	IP67
Encapsulation	Polycarbonate
Dimension	145x145x35 mm
Weight	335g (exclusive power battery)
Calibration	Factory calibration valid for 2 years, unless otherwise agreed

Part number	9I1UC-G	9I0UA
Data transmission		
LTE/GSM	Global connectivity, frequency bauds LTE/3G/2G	-
Communication	USB-C	USB-C
Measuring channels		
Acceleration	$\pm 16g$ (3-axis), 12 optional filter settings 8,8-800Hz, resolution 0,01g, accuracy $\pm 2\%$. Event triggered on pre-set levels	$\pm 16g$ (3-axis), 12 optional filter settings 8,8-800Hz, resolution 0,01g, accuracy $\pm 2\%$. Event triggered on preset levels
Detailed Vibration Analysis	Event triggered on preset level. Shock curve stored	Event triggered on preset level. Shock curve stored
Angle	$\pm 180^\circ$, resolution $\pm 0,1^\circ$, accuracy $\pm 1^\circ$. Calculation from static acceleration before and after acceleration alarm limit.	$\pm 180^\circ$, resolution $\pm 0,1^\circ$, accuracy $\pm 1^\circ$. Calculation from static acceleration before and after acceleration alarm limit.
GPS	72 satellite channels indicates the Geoposition, GPS $\pm 2,5m$, at optimal antenna placement (GPS, Beidou, Galileo). Internal antenna	-
Specification		
Memory	Flash memory 32MB, up to 1 500 000 events	Flash memory 32MB, up to 2 000 000 events
Power supply	2 batteries type C lithium metal (replacable)	4 batteries type AA, lithium metal or alkaline (replacable)
Operating time**	Up to 13 190 hours (1,5 years)* ⁺	Up to 17 160 hours (~1,9 years)*

**Batteries not included in delivery

*in case of 1 sample per 6 hour (exkl. shock curve data).

⁺in case of 1 transmission per 24 hour.

Factory Fit Options



Acceleration $\pm 200g$



Air Pressure



SMA socket for connection of an external antenna



Light



Digital inputs/outputs



Bluetooth module



External power



Magnet foot mounting

CARGOLOG® 3RD GEN - IMPACT & CONDITION MONITORING

**2 YEARS
EXTENDED
WARRANTY**



Measuring environmental conditions in the transportation chain for steel, plastic, refrigerated and frozen transport are common, as the transportation and storage of valuable objects, sensitive goods, or electronics. Mount the system directly on the package and get a clear picture of the handling throughout the logistics chain.

- Ensure your product is transported under optimal conditions
- Peak acceleration and duration of the event
- Full picture of transport conditions

Supported Software



Cargolog Connect

- » High-precision sensors to measure impact and shock events, providing accurate data for analysis.
- » Transmit data in real-time, allowing for immediate action to be taken if an impact or shock event occurs.
- » User-friendly and can be easily installed on any type of cargo.
- » Monitor a wide range of transportation modes, including sea, air, and road transport.
- » Customize to suit your specific needs, including the number of sensors and the frequency of data transmission.
- » Built with high-quality materials and is designed to withstand harsh environmental conditions, ensuring reliable operation even in extreme temperatures and humidity.
- » Reduce the risk of damage to goods and equipment during transport, potentially reducing costs associated with repair or replacement.

Technical Data	
Operation conditions	-40°C to +85°C (lithium), -18°C to +50°C (alkaline)
Communication	USB-C
Date/Time	UTC (date/time), supported by the internal battery
Protection class	IP67
Encapsulation	Polycarbonate
Dimension	145x145x35 mm
Weight	335g (exclusive power battery)
Calibration	Factory calibration valid for 2 years, unless otherwise agreed

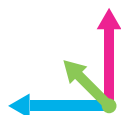
Part number	9S1UC-G	9S0UA
Data transmission		
LTE/GSM	Global connectivity, frequency bauds LTE/3G/2G	-
Communication	USB-C	USB-C
Measuring channels		
Acceleration	±16g (3-axis), 12 optional filter settings 8,8-800Hz, resolution 0,01g, accuracy ±2%. Event triggered on preset levels	±16g (3-axis), 12 optional filter settings 8,8-800Hz, resolution 0,01g, accuracy ±2%. Event triggered on preset levels
Angle	±180°, resolution ±0,1°, accuracy ±1°. Calculation from static acceleration before and after acceleration alarm limit.	±180°, resolution ±0,1°, accuracy ±1°. Calculation from static acceleration before and after acceleration alarm limit.
Temperature	-40°C to +85°C, 0,01°C, accuracy ±0,5°C	-40°C to +85°C, 0,01°C, accuracy ±0,5°C
Humidity	0-100%, resolution 0,01% RH, accuracy ±3% RH	0-100%, resolution 0,01% RH, accuracy ±3% RH
GPS	72 satellite channels indicates the Geoposition, GPS ±2,5m, at optimal antenna placement (GPS, Beidou, Galileo). Internal antenna	-
Specification		
Memory	Flash memory 32MB, up to 1 900 000 events	Flash memory 32MB, up to 2 900 000 events
Power supply	2 batteries type C lithium (replacable)	4 batteries type AA, lithium or alkaline (replacable)
Operating time**	Up to 13 190 hours (1,5 years)**	Up to 17 160 hours (~1,9 years)*

**Batteries not included in delivery

*in case of 1 sample per 6 hour (exkl. shock curve data).

+in case of 1 transmission per 24 hour.

Factory Fit Options



Extended acceleration measurement



Detailed Vibration Analysis



Air Pressure



SMA socket for connection of an external antenna



Light



Digital inputs/outputs



Bluetooth module



External power



Magnet foot mounting

CARGOLOG® 3RD GEN - TRACK & TRACE



**2 YEARS
EXTENDED
WARRANTY**



A digital tool that makes it easy to track goods in real-time. Through increased visibility, Cargolog® Track & Trace enables streamlining of the flow of goods. Well suited for goods owners and operators. Track your goods' position and status from departure to arrival.

- Track your shipments
- Calculate delivery date
- See the route

Supported Software



Cargolog Connect

- » Improved location accuracy which can be used to track the location of a cargo.
- » Transmit data in real-time, allowing for immediate action to be taken if an deviation from the intended route is detected.
- » User-friendly and can be easily installed on any type of cargo.
- » Monitor a wide range of transportation modes, including sea, air, and road transport.
- » Customize to suit your specific needs, including the number of sensors and the frequency of data transmission.
- » Built with high-quality materials and is designed to withstand harsh environmental conditions, ensuring reliable operation even in extreme temperatures and humidity.
- » Make better-informed decisions about supply chain processes, reducing risk and improving efficiency.

Technical Data	
Operation conditions	-40°C to +85°C (lithium), -18°C to +50°C (alkaline)
Communication	USB-C
Date/Time	UTC (date/time), supported by the internal battery
Protection class	IP67
Encapsulation	Polycarbonate
Dimension	145x145x35 mm
Weight	335g (exclusive power battery)
Calibration	Factory calibration valid for 2 years, unless otherwise agreed

Part number	9G1UC-G	9G0UA
Data transmission		
LTE/GSM	Global connectivity, frequency bauds LTE/3G/2G	-
Communication	USB-C	USB-C
Measuring channels		
GPS	72 satellite channels indicates the Geoposition, GPS $\pm 2,5\text{m}$, at optimal antenna placement (GPS, Beidou, Galileo). Internal antenna	-
Specification		
Memory	Flash memory 32MB, up to 1 100 000 events	Flash memory 32MB, up to 798 000 events
Power supply	2 batteries type C lithium (replacable)	4 batteries type AA, lithium or alkaline (replacable)
Operating time**	Up to 13 200 hours (1,5 years)** ⁺	Up to 11 300 hours (~1,2 years)*

**Batteries not included in delivery

*in case of 1 sample per 6 hour (exkl. shock curve data).

⁺in case of 1 transmission per 24 hour.

Factory Fit Options



SMA socket for connection
of an external antenna



Bluetooth module



External power



Magnet foot mounting

Cargolog® 2nd Gen - Basic Recorder



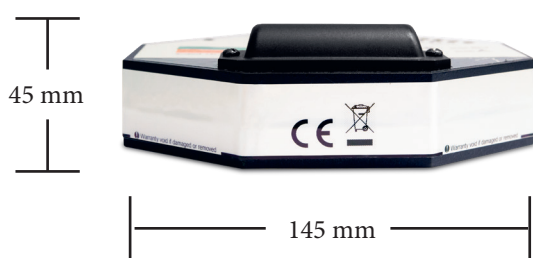
**2 YEARS
EXTENDED
WARRANTY**



Measure and record the impacts & shock and temperature changes of up to 10 000 measurement values with date and time. Establish if your goods get exposed to conditions that could cause visible or concealed damage during transportation and handling. The Basic Recorder is used by professionals worldwide - a stand-alone device with a battery life of up to 20 months.

- The Basic Recorder is equipped with the same quality and reliability level as the Standard Recorder but with reduced functionality and memory capacity.
- For monitoring sensitive cargo of shocks and accelerations.

Article no.: 60910



Article no.: 60909



Battery supply

Lithium 3,6V, LS26500, C-size bobbin cell /
Alkaline 1,5V, Pro cell, Size C

Battery life

(Li) Up to 7 000 hours (~9.5 months)/
(Al) 3 600 hours (~5 months)*

Weight

420 g / 0,93 Ib**



Battery supply

Lithium 3,6V, LS33600, D-size bobbin cell /
Alkaline 1,5V, Pro cell, Size D

Battery life

(Li) Up to 14 900 hours (~20 months)/
(Al) 7 500 hours (~10 months)*

Weight

464 g / 1.02 Ib**



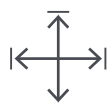
*In case of 1 sample per 6 hours

**Including power battery

Specifications



10 000 measurement values



145 x 145 mm
5.70 x 5.70 in



0,3-10 g $\pm 3\%$, 0,5-20 Hz, resolution 0,01 g,
speed of sampling for acceleration 1kHz.
Event triggered on preset levels.



-40°C to +85°C, $\pm 0,1^\circ\text{C}$; min interval
1 min - interval > 1 year; resolution 2s.

Factory Fit Options

GPS Positioning

G	Socket for external GPS antenna
G1	Internal GPS antenna
G2	Internal GPS antenna & socket for external GPS antenna

Measuring Options

N	Detailed vibration analysis*
P	Internal Pressure sensor
P1	External Pressure sensor
T1	Temperature range -50°C to +85°C
W	External switch

Acceleration Ranges

M	0.2-10 g	M1	0,2-2 g
M2	0,5-16 g	M3	0,5-40 g

Low Pass Filter

F2	0.5-40 Hz	F4	0,5-100 Hz
F5	0.5-200 Hz		

Wired Communication

I	IR-to-USB Interface, docking station
C	USB Type C

Wireless Communication

B	Bluetooth
Z	ZigBee

Power Battery

E	Delivery without power supply battery
A	Delivery including alkaline battery

Extended Memory Capacity

U2	42 200 measurement values
U	87 300 measurement values
U1	175 000 measurement values

*Extended memory capacity 175 000 measurement values required with this option

Cargolog® 2nd Gen - Standard Recorder



**2 YEARS
EXTENDED
WARRANTY**

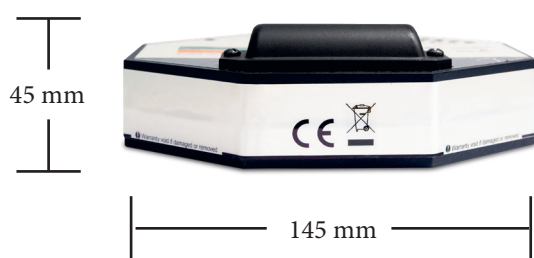


Measure and record the impacts & shocks, temperature, humidity, and angle/leaning of up to 42 200 events with date and time. The device is used by professionals worldwide – a stand-alone device with a battery life up to 20 months.

- Our most sold unit for monitor transports of fragile goods with built in sensors.
- Calibration certificate always included

- Used for monitoring shocks and accelerations, temperature, humidity and angle.

Article no.: 60912



Battery supply

Lithium 3,6V, LS26500, C-size bobbin cell /
Alkaline 1,5V, Pro cell, Size C

Battery life

(Li) Up to 7 000 hours (~9.5 months)/
(Al) 3 600 hours (~5 months)*

Weight

420 g / 0,93 Ib**



Article no.: 60914



Battery supply

Lithium 3,6V, LS33600, D-size bobbin cell /
Alkaline 1,5V, Pro cell, Size D

Battery life

(Li) Up to 14 900 hours (~20 months)/
(Al) 7 500 hours (~10 months)*

Weight

464 g / 1.02 Ib**

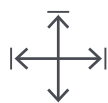


*In case of 1 sample per 6 hours
**Including power battery

Specifications



42 200 measurement values



145 x 145 mm
5.70 x 5.70 in



0,3-10 g $\pm 3\%$, 0,5-20 Hz, resolution 0,01 g,
speed of sampling for acceleration 1kHz.
Event triggered on preset levels.



-40°C to +85°C, $\pm 0,1^\circ\text{C}$; min interval
1 min - interval > 1 year; resolution 2s.



0-100%, $\pm 3\%$ FS; min interval 1 min - in-
terval > 1 year, resolution 2s.



0-90°; measuring of inclination in relation
to horizontal $\pm 10^\circ$; resolution 5° ; activated
by acceleration or interval; min interval 1
min - interval > 1 year; resolution 2s.

Factory Fit Options

Measuring Options

N	Detailed vibration analysis*
P	Internal Pressure sensor
P1	External Pressure sensor
T1	Temperature range -50°C to +85°C
W	External switch

Acceleration Ranges

M	0.3-10 g	M1	0,3-2 g
M2	0,5-16 g	M3	0,5-40 g

Low Pass Filter

F2	0.5-40 Hz	F4	0,5-100 Hz
F5	0.5-200 Hz		

Wired Communication

I	IR-to-USB Interface, docking station
C	USB Type C

Wireless Communication

B	Bluetooth
Z	ZigBee

Power Battery

E	Delivery without power supply battery
A	Delivery including alkaline battery

Extended Memory Capacity

U	87 300 measurement values
U1	175 000 measurement values

*Extended memory capacity 175 000 measurement values required with this option

Cargolog® 2nd Gen - GPS Positioning



**2 YEARS
EXTENDED
WARRANTY**



Integrated GPS positioning allows the user to analyze the route of the transport or to see a specific location of an event in Google Maps; or the map of your choice. Measure and record the impacts & shocks, temperature, humidity, and angle/leaning of 42 200 measurement values with date and time. Export the data and the map of the entire route and share it with colleagues or partners with a single click in the associated software.

- The GPS-unit is built on our reliable Standard unit with the large D-cell Battery.
- The GPS helps you find out who was responsible for the goods at a specific time and it is using all satellites from GPS, Glonass and Galileo.

Article no.: 60919



Battery supply

Lithium 3,6V, LS33600, D-size bobbin cell /
Alkaline 1,5V, Pro cell, Size D

Battery life

(Li) Up to 12 960 hours (~18 months)/
(Al) 6 500 hours (~9 months)*

Weight

520 g / 1.15 lb**

*In case of 1 sample per 6 hours

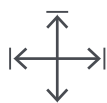
**Including power battery



Specifications



42 200 measurement values



145 x 145 mm
5.70 x 5.70 in



0,3-10 g $\pm 3\%$, 0,5-20 Hz, resolution 0,01 g,
speed of sampling for acceleration 1kHz.
Event triggered on preset levels.



-40°C to +85°C, $\pm 0,1^\circ\text{C}$; min interval
1 min - interval > 1 year; resolution 2s.



0-100%, $\pm 3\%$ FS; min interval 1 min - in-
terval > 1 year, resolution 2s.



0-90°; measuring of inclination in relation
to horizontal $\pm 10^\circ$; resolution 5° ; activated
by acceleration or interval; min interval 1
min - interval > 1 year; resolution 2s.



GPS receiver, 72 channel indicates the
Geoposition, up to $\pm 2,5\text{m}$ (CEP)

Factory Fit Options

GPS positioning

G1	Internal GPS antenna
G2	Internal GPS antenna & socket for external GPS antenna

Measuring Options

N	Detailed vibration analysis*
P	Internal Pressure sensor
P1	External Pressure sensor
T1	Temperature range -50°C to +85°C
W	External switch

Acceleration Ranges

M	0.3-10 g	M1	0,3-2 g
M2	0,5-16 g	M3	0,5-40 g

Low Pass Filter

F2	0.5-40 Hz	F4	0,5-100 Hz
F5	0.5-200 Hz		

Wired Communication

I	IR-to-USB Interface, docking station
C	USB Type C

Wireless Communication

B	Bluetooth
Z	ZigBee

Power Battery

E	Delivery without power supply battery
A	Delivery including alkaline battery

Extended Memory Capacity

U	87 300 measurement values
U1	175 000 measurement values

*Extended memory capacity 175 000 measurement values required with this option

Cargolog® 2nd Gen - Online Tracking



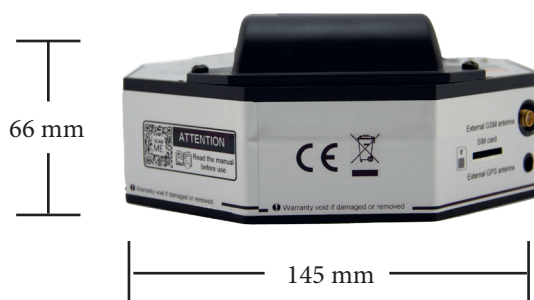
**2 YEARS
EXTENDED
WARRANTY**



Get information in real-time and follow your cargo with Online tracking during the entire logistics chain. Measure and record the impacts, temperature, humidity, and angle/leaning with GPS positioning of 42 200 events with date and time. The data is sent in real-time so you can respond directly if an abnormal value is reached. It is a stand-alone device with battery life up to 18 month.

Article no.: 60935

Single battery



Article no.: 61935

Dual batteries



Battery supply

Lithium 3,6V, LSH20, D-size bobbin cell /

Battery supply

1. Lithium 3,6V, LS33600, D-size bobbin cell¹ /
2. Lithium 3,6V, LSH20, D-size spiral cell²

Battery life

(Li) Up to 3 400 hours (~4 months)

Battery life

1. (Li) Up to 17 000 hours (~23 months)* /
2. (Li) Up to 12 960 hours (~18 months)**

Weight

640 g / 1.41 Ib***



Weight

770 g / 1,70 Ib***



*In case of 1 sample per 6 hours

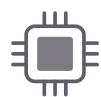
**In case of 1 transmission per 24 hour

***Including power battery

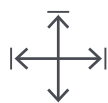
¹ Run the operation of GPS, acceleration, humidity, temperature and angle

² Run the operation of 4G/LTE

Specifications



42 200 measurement values



145 x 145 x 66 mm
5.70 x 5.70 x 2,60 in



0,3-10 g $\pm 3\%$, 0,5-20 Hz, resolution 0,01 g,
speed of sampling for acceleration 1kHz.
Event triggered on preset levels.



-40°C to +85°C, $\pm 0,1^\circ\text{C}$; min interval
1 min - interval > 1 year; resolution 2s.



0-100%, $\pm 3\%$ FS; min interval 1 min - in-
terval > 1 year, resolution 2s.



0-90°; measuring of inclination in relation
to horizontal $\pm 10^\circ$; resolution 5° ; activated
by acceleration or interval; min interval 1
min - interval > 1 year; resolution 2s.



GPS receiver, 72 channel indicates the
Geoposition, up to $\pm 2,5\text{m}$ (CEP)



Integrated full GSM Quad-band

Factory Fit Options

GPS Positioning

G1	Internal GPS antenna
G2	Internal GPS antenna & socket for external GPS antenna

Measuring Options

N	Detailed vibration analysis*
P	Internal Pressure sensor
P1	External Pressure sensor
W	External switch

Acceleration Ranges

M	0.3-10 g	M1	0,3-2 g
M2	0,5-16 g	M3	0,5-40 g

Low Pass Filter

F2	0.5-40 Hz	F4	0,5-100 Hz
F5	0.5-200 Hz		

Wired Communication

I	IR-to-USB Interface, docking station
C	USB Type C

Wireless Communication

B	Bluetooth
Z	ZigBee

Power Battery

E	Delivery without power supply battery
---	---------------------------------------

Extended Memory Capacity

U	87 300 measurement values
U1	175 000 measurement values

*Extended memory capacity 175 000 measurement values required with this option



Cargolog® Connect

Handling data should not be complicated. With the new software solution, you can see all information from your Cargolog® device, Cargolog® 3rd Gen, and their data in one system. Setup the device, manage users, analyze and share the data directly in a report or invite users to look at it. The system makes you work faster and link information quickly and easily.



Admin

Manage licenses and users. Purchase new licenses, add users and handle payments



Program & Activate

Limited licens with functions to setup device, and read data. Can only see limited data in the quick report.



Premium

Full version, licens access on all plat-forms. Setup device, read data and analyze detailed data. Create, edit and share templates. View all data uploaded to cyour compmany.



Free

Free of charge license with limited functionality. Read data with function to only see limited data in the quick report.

System requirements

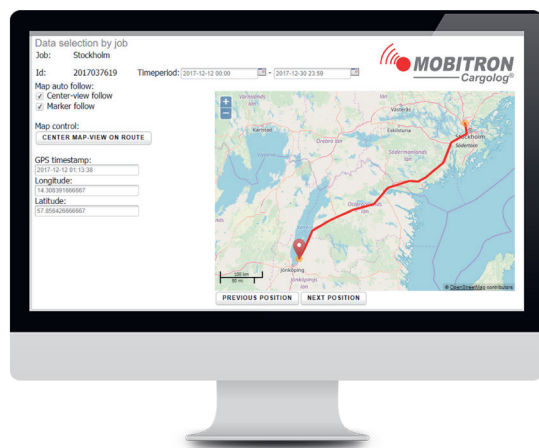
- Intel 6th generation or later processor or equivalent x86 processor (not ARM).
- Microsoft Windows 10, Windows 11 (64-bit versions); Windows 7, Windows 8.1 not supported
- 4 GB OF RAM
- 0.5 GB of free hard disk space to install and use programs. Does not apply to online service.
- 1280 x 800 pixels screen resolution
- Internet connection required for initial login to the product and downloading and syncing of online material.



Used for
TYPE

	Admin	Premium	Program & Activate	Free
Application				
Phone		X	X	X
PC	X	X	X	X
Cloud	X	X	X	X
Bluetooth		X	X	X
Compare				
Compare data/files		X		
Reports				
Reports		X		
Read data		X	X	X
View Cloud data		X		
Upload data to Cloud		X	X	X
Auto sync of data to Cloud		X		
View data in Standard dashboard		X		
Custom Dashboard		X		
Create and Edit dashboard		X		
Quick report		X	X	X
DVA data		X		
View Parameters		X	X	X
Export data		X		
Share data		X	X	X
Print data		X		
Setup device				
Create, Edit and Share Parameters		X	X	
Create, Edit and Share Templates		X		
View templates		X	X	
Set Password		X	X	
My devices				
See my units		X		
See all units and who programmed it, notification, alarms, new data etc.		X		
Update Firmware		X		
Projects				
View data for shared project		X	X	X
Create, Edit and Share Project		X		
End Projects		X		
Mark device as finished transport		X		
Admin				
Handle all users	X			
Handle all Company Licenses	X			
Handle Company details	X			

Cargolog Online



Access information 24/7 by using the cloud service, Cargolog® Online. You, your colleagues, or customers can review the measurement results on any Internet or data-enabled device such as a computer, tablet, or mobile device. The data result is visible both in graphical and tabular form, without any complicated installations. Cargolog® Online is easy to use and, with a personal login, you can protect all of the data from unauthorized individuals.



Subscription

Order options

60621-Y Yearly fee, including SIM card subscription with Worldwide roaming 5 MB/Month.

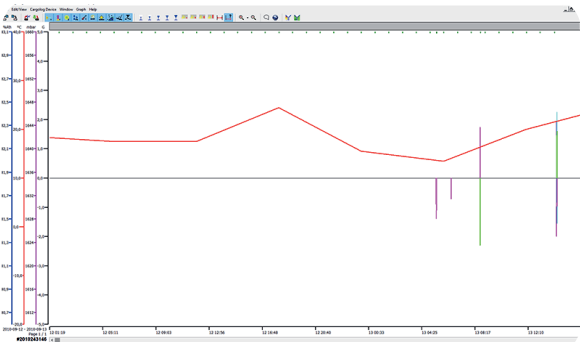
60621-Y2 Two years fee, including SIM card subscription with Worldwide roaming 5 MB/Month

Extend your Cargolog Online subscription

In case you want to buy an extension after your subscription has expired, this is done at Mobitron AB as Cargolog Online needs to be reactivated. The reactivation needs to be done before you can continue to use its services. Reactivating after the subscription has expired could cause additional costs and require a SIM card change. It is, therefore, advantageous to extend the subscription before it expires.

If you don't renew your subscription, the subscription will be ended. You will no longer be able to send and view data via Cargolog Online from your Cargolog device.

Cargolog PC Software



The software used for configuring, analyzing and extracting the data from the Cargolog® device is easy to use and install. All measurement results are displayed in a diagram and can be analyzed second by second.

The software is a multilingual platform, easy to install and user-friendly. Most employees of your company can easily use it. The communication between the software and the Cargolog® device is performed using wired connection; IR-to-USB or wireless communication; Bluetooth or Zig-Bee.



OS	Windows 10
Language	ENG / DE / ITA / SWE / ES
Delivery media	Download from website
Manual language	English

Order options	
60950	Full version
60955	View/Read version
60953	Read only version

Mobitron APP



With Mobitron user-friendly APP, you can simplify the daily work by transferring and getting access to the data results directly on your smartphone/tablet without additional equipment.



OS	Android
Language	English
Delivery media	Google Play

Order options	
60963	Standard

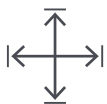
IR-to-USB Interface, TopCom



Use the IR-to-USB Interface, TopCom to connect the Cargolog® device equipped with topside IR communication to your PC. It is placed directly on top of the Cargolog® device, and you can use it even when the device is mounted in the metal case and installation bracket.




Article no.: 60944



150 x 48 x 35 mm

5.9 x 1.89 x 1.37 in



145 g

0.319 lb

Material	Polycarbonate
Connectivity	USB 2.0

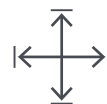
IR-to-USB Interface, Docking station



Connect the IR-to-USB Interface to your PC and place the Cargolog® device in the docking station. With the IR-to-USB Interface, docking station, you can download parameters to activate the Cargolog® device and read out the collected data after or during the recording period. The docking station is mainly used together with the Cargolog® device equipped with dual batteries.




Article no.: 60948



145 x 145 x 45 mm

5.7 x 5.7 x 1.77 in



201 g

0.44 lb

Material	Polycarbonate
Connectivity	USB 2.0

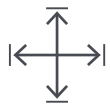


Cable with USB-C to USB-A



Connect the Cargolog® Impact & Shock Recorder equipped with USB-C to your PC. Activate the Cargolog® device and read out the collected data, after or during the recording period.

Article no.: 75002



160 x 160 x 14 mm
6,3 x 6,3 x 0,55 in



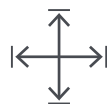
44 g
0.097 lb



Material	PVC
Connectivity	USB 3,1

Holder

Article no.: 60920



200 x 150 x 34 mm
7.87 x 5.90 x 1.33 in



655 g
1.44 lb

Material	Steel
Surface treatment	Enamel paint, black
Mounting	Screw or straps
Drill plan rectangular	162 x 95 mm

Use for installing the Cargolog® device on your cargo where mechanical protection or protection against gases or liquids, not is necessary. Mounting the holder to your cargo is done with straps or screws. Alternatively, delivered from the factory with magnets for easy mounting.



Factory Fit Options

Order options

- D Wired drop secured knobs to avoid that they disappear.
- M4 Adapted for Cargolog® Device with Online Tracking

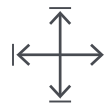
Mounting

- N5 5 magnet of NdFeb, anisotropic

Mounting Console

Article no.: 60981

2 YEARS
EXTENDED
WARRANTY



200 x 160 x 87 mm
7.87 x 6.3 x 3.42 in



4 300 g
9.48 lb

Material	Steel
Surface treatment	Enamel paint, grey
Mounting	Screw 1 x M16 (included in delivery)
Grid grip	43 mm

Use for installing the Cargolog® device on a beam or similar, where mechanical protection or protection against gases or liquids is not necessary.



Factory Fit Options

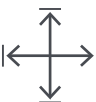
Order options


- D Wired drop secured knobs to avoid that they disappear.
- M4 Adapted for Cargolog® Device with Online Tracking

IP67 Protective Metal Case

Article no.: 60990



260 x 160 x 92 mm
10,23 x 6,3 x 3,62 in

2 700 g
5,95 lb

Material	Aluminium
Surface treatment	Enamel paint, grey
Mounting	Screw 4xM6 (included in delivery)
Drill plan rectangular	240 x 110 mm
IP classification	IP67 (EN 60529 standard)
Mechanical protection	IK09, >7 Joules (IEC 62262 standard)

Use to install the Cargolog® device on your cargo and protect it from mechanical damages, aggressive gases and, liquids. With an advanced bleeding valve which consists of a ventilation channel with a waterproof, breathable membrane.

The Metal Case meets IP classification IP67 according to the IEC 60529 standard and the IK classification

IK09, >7 joules according to the IEC 62262 standard. Due to the pressure equalizing system, you can easily remove the lid from the enclosure. The metal casing itself offers reliable protection against any mechanical impacts to which the impact recorder can be subject to within a harsh industrial environment, industrial environment.



Factory Fit Options

Order options

D Wired drop secured knobs to avoid that they disappear.

Mounting

N6 4 magnet of NdFeb, anisotropic

Cable gland to connect external GPS antenna

G Placement, short side

G1 Placement, long side

Cable gland to connect external GSM antenna

M Placement, short side

M1 Placement, long side

Fixed antenna (antenna ordered separately)

G7 GPS antenna, placement long side

G8 GPS antenna, placement lid

G9 GPS antenna, placement short side

M5 LTE/GSM antenna, placement long side

M6 LTE/GSM antenna, placement short side

M7 Combined LTE/GSM/GPS antenna, placement long side

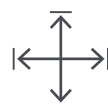
M8 Combined LTE/GSM/GPS antenna, placement lid

M9 Combined LTE/GSM/GPS antenna, placement short side

Protective metal case, ventilated

Article no.: 60987

2 YEARS
EXTENDED
WARRANTY



260 x 160 x 92 mm
10,23 x 6,3 x 3,62 in



3 720 g
2,20 lb

Material	Aluminium
Surface treatment	Enamel paint, grey
Mounting	Screw 4xM6 (included in delivery)
Drill plan rectangular	240 x 110 mm
Mechanical protection	IK09, >7 Joules (IEC 62262 standard)

The ventilated protective metal case is used to install the Cargolog® device on your cargo and protect it from mechanical damages. The casing is ventilated to allow easy measuring and recording of temperature, humidity,

and pressure with built-in sensors. The housing can be mounted with screws or, at your choice, delivered with magnets for easy mounting.



Factory Fit Options

Order options

D Wired drop secured knobs to avoid that they disappear.

Mounting

N6 4 magnet of NdFeb, anisotropic

Cable gland to connect external GPS antenna

G Placement, short side

Cable gland to connect external GSM antenna

M Placement, short side

Fixed antenna (antenna ordered separately)

M6 LTE/GSM antenna, placement short side

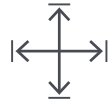
M9 Combined LTE/GSM/GPS antenna, placement short side

G9 GPS antenna, placement short side

IP68 Protective metal case - low profile

Article no.: 60989

2 YEARS
EXTENDED
WARRANTY



260 x 160 x 60 mm
10.23 x 6.3 x 2,36 in



2 300 g
5,07 lb

Material	Aluminium
Surface treatment	Enamel paint, grey
Mounting	Screw 4xM6 (included in delivery)
Drill plan rectangular	240 x 110 mm
IP classification	IP68 (EN 60529 standard)
Mechanical protection	IK09, >7 Joules (IEC 62262 standard)

The protective metal case with a low profile is used to mount the Cargolog® device to your cargo when there is a limited height, or a higher IP classification is required.

It is a robust protective casing that meets the requirements of IP68 according to the IEC 60529 standard

and the IK classification IK09, >7 joules according to the IEC 62262 standard. The casing offers reliable protection against any mechanical impacts to which the impact recorder can be subject to within a harsh industrial environment.



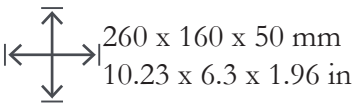
Factory Fit Options

Order options

- D Wired drop secured knobs to avoid that they disappear.

Mounting console for Metal Case

Article no.: 60988



3 720 g
8.20 lb



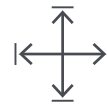
Material	Steel
Surface treatment	Enamel paint, Black
Screw	1xM16 (included in delivery)

The mounting console for metal case is used to mount the casing on a beam or similar surface directly on your cargo. The housing is mounted directly on the console.



Protective polycarbonate case

Article no.: 75001



255 x 180 x 100 mm
10,04 x 7,09 x 3,94 in



1 400 g
3,07 lb

Material	Polycarbonate
Surface treatment	RAL 7035
Mounting	Screw 4xM6 (included in delivery)
Drill plan rectangular	238,5 x 163,5 mm
IP classification	IP67 (EN 60529 standard)



Factory Fit Options

Order options

D Wired drop secured knobs to avoid that they disappear.

Mounting

N6 4 magnet of NdFeb, anisotropic

Cable gland to connect external GPS antenna

G Placement, short side

G1 Placement, long side

Cable gland to connect external GSM antenna

M Placement, short side

M1 Placement, long side

Fixed antenna (antenna ordered separately)

G7 GPS antenna, placement long side

G8 GPS antenna, placement lid

G9 GPS antenna, placement short side

M5 LTE/GSM antenna, placement long side

M6 LTE/GSM antenna, placement short side

M7 Combined LTE/GSM/GPS antenna, placement long side

M8 Combined LTE/GSM/GPS antenna, placement lid

M9 Combined LTE/GSM/GPS antenna, placement short side

4G/LTE/3G/2G Magnetic Mount Antenna

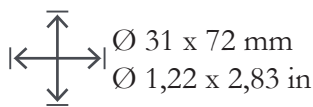
2 YEARS
EXTENDED
WARRANTY



External GSM antenna with Magnetic foot and 3m cable. Connect the external GSM antenna to the Cargolog Device for transferring data in real-time.



Article no.: 60972-M4



Frequency	698-960 MHz 1710-2170 MHz 2500-2700 MHz
Mounting	Magnet
Length of Cable	300 cm
Operating Temperature	-40 °C to +85 °C

4G/LTE Connector Mount Antenna

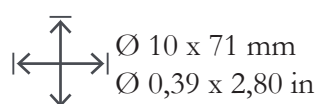
2 YEARS
EXTENDED
WARRANTY



GSM antenna mounted directly on Cargolog® Impact & Shock Recorders equipped with 4G/LTE units to communicate data in real-time.



Article no.: 65002



Frequency	698-960 MHz, 1710-2170 MHz, 2500-2700 MHz
Mounting	Connector Mount
Operating Temperature	-40 °C to +85 °C

4G/LTE and GPS, Screw Mount, 2in1

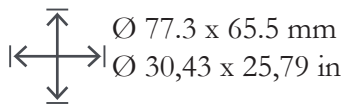
2 YEARS
EXTENDED
WARRANTY



Combined GSM/GPS antenna with screw mount mounted directly on the enclosure. No visible cables outside the enclosure protect from sabotage.



Article no.: 75011



Frequency LTE	698-960 MHz 1700-2100 MHz 2500-2700 MHz
Frequency GPS	1575.42 MHz 1598-1606 MHz
Mounting	Screw Mount
Certificates	IP67, IK09, IP69K
Operating Temperature	-40 °C to +85 °C

GPS Antennas

External GPS antenna, with Magnet Foot

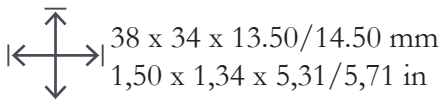
2 YEARS
EXTENDED
WARRANTY



The External GPS antenna with a magnetic foot is used for recording GPS position. It connects to a Cargo-log® device equipped with a socket for external GPS antenna.



Article no.: 60985



Frequency	1575.42, 1598-1606
-----------	--------------------

Mounting	Magnetic/Adhesive Mount
----------	-------------------------

Length of Cable	300 cm
-----------------	--------

Certificates	IP67
--------------	------

Operating Temperature	-40 °C to +85 °C
-----------------------	------------------

GPS Antenna, Screw Mount

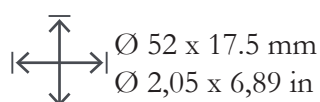
2 YEARS
EXTENDED
WARRANTY



GPS antenna mounted directly on enclosure for recording the GPS position. No visible cables outside the enclosure protect from sabotage.



Article no.: 75012



Frequency	1575.42, 1598-1606 MHz
-----------	------------------------

Mounting	Screw
----------	-------

Certificates:	IP69K
---------------	-------

Operating Temperature	-40 °C to +85 °C
-----------------------	------------------

External Vibration Detector



The device is connected externally to the Cargolog® device equipped with the external switch. It records vibration and the data is shown as vibration / no vibration, with the duration.



Article no.: 60949

86 g

0.19 lb

Mounting	Magnets
Vibration Measurement rate	2-10Hz

Lithium Metal Battery

Lithium battery - SL-2770, Size C



3.6V Primary lithium-thionyl chloride (Li/SOCl₂).
Operation Battery Lithium Tadiran SL-2770.

Article no.: 60991-1



Operating Temperature	-55 °C to +85 °C
Storage Temperature (recommended)	+5 °C to +30 °C
Lithium metal content	Approx. 2.5 g

Lithium battery - LS 14500, Size AA



3.6V Primary lithium-thionyl chloride (Li/SOCl₂).
Operation Battery Lithium LS 14500.

Article no.: 61014



Operating Temperature	-60 °C to +85 °C
Storage Temperature (recommended)	+5 °C to +30 °C
Lithium metal content	Approx. 0,7 g

Lithium battery - LS33600, Size D



3.6V Primary lithium-thionyl chloride (Li/SOCl₂).
Operation Battery Lithium LS26500 used with Car-
golog® Impact & Shock Recorder.



Article no.: 60992



Operating Temperature	-60 °C to +85 °C
-----------------------	------------------

Storage Temperature (recommended)	+5 °C to +30 °C
-----------------------------------	-----------------

Lithium metal content	Approx. 4.5 g
-----------------------	---------------

Lithium battery - LSH20, Size D



Primary lithium-thionyl chloride (Li-SOCl₂). Opera-
tion Battery Lithium 3,6V LSH20 used with Cargo-
log® Impact & Shock Recorder equipped with online
tracking.



Article no.: 60998



Operating Temperature	-60 °C to +85 °C
-----------------------	------------------

Storage Temperature (recommended)	+5 °C to +30 °C
-----------------------------------	-----------------

Lithium metal content	Approx. 3,8 g
-----------------------	---------------

Alkaline battery

Alkaline battery - Pro cell, Size C



1.5V Primary Alkaline size C (LR14). Manganese Dioxide (Zn/MnO₂) used with Cargolog® Impact Recorder.

Article no.: 60993



KG

69 g
0.15 lb


Used for

2nd Gen

Used for

3rd Gen

SCAN OR CLICK



Operating Temperature	-18 °C to +50 °C
Storage Temperature	+5 °C to +30 °C
Height (Max)	50 mm

Alkaline battery - Pro cell, Size D



3.6V Primary lithium-thionyl chloride (Li/SOCI₂). Operation Battery Lithium Tadiran SL-2770 used with Cargolog® Impact & Shock Recorder.

Article no.: 60994



KG

139 g
0.30 lb


Used for

2nd Gen

Used for

3rd Gen

SCAN OR CLICK



Operating Temperature	-18 °C to +50 °C
Storage Temperature	+5°C to +30 °C
Height (Max)	61,5 mm

WE OFFER A WIDE RANGE OF SERVICES



CUSTOMIZED

Together we can customize the product to suit your business. All development and manufacturing take place directly at our head office in Sweden.



ENSURE THE ACCURACY

Each data logger is tested and calibrated following international references—high-quality products with accurate and reliable data.



WE WILL HELP YOU

We are an independent player who provides you with documented facts. We can help you with a project from start to finish or with a specific task.



TRAINING AND EDUCATION

We will help you with technical training and education to optimize our products' use to achieve the project's goals.

CERTIFIED QUALITY

- Our commitment to ethics, quality, and environment!

Our commitment to quality and the environment is reflected in our ISO 9001 and ISO 14001 certifications. These certificates attest to the high quality of our products and the rigorous standards we uphold to meet the international requirements of these certifications. We work hard to maintain these certifications, ensuring that our business management systems meet the highest standards and that our environmental impact is minimized.

Our dedication has not gone unnoticed, as we have received the highest credit rating, AAA SILVER DIPLOMA, from Bisnode since 2007. This distinction proves our financial stability and reliability, instilling confidence in our customers and suppliers.



DISPOSAL AND RECYCLING WEEE

Disposal of Old Electrical & Electronic Equipment (Applicable throughout the European Union and other European countries with separate collection programs.)



This symbol found on your product or its packaging indicates that this product should not be treated as household waste when you wish to dispose of it. Instead, hand it over to an appropriate collection point to recycle electrical and electronic equipment.

The recycling of materials will help to conserve natural resources. For example, the packaging material of cartons and corrugated cardboard can and should be recycled. After use, the power supply batteries are recycled at an appropriate collection point.

Ensuring this product is disposed of correctly will help prevent potential adverse environmental and human health consequences. Therefore, send the electronic device back to the manufacturer when it has served its time, and we, as the manufacturer of the device, will take care of the recycling free of charge.

Mobitron AB
Hunneryds Gård 1
SE-56146 Huskvarna
Sweden





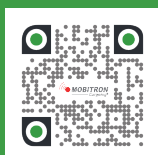
Mobitron AB
Hunneryds Gård 1
SE-561 46 Huskvarna
Sweden



+46 (0)36-512 25



info@mobitron.com



<https://mobitron.com/>

